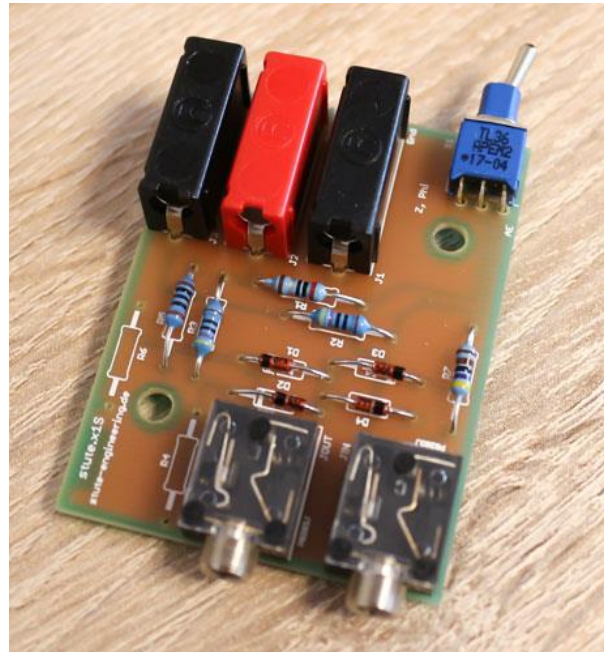


**Part list**

- 1x PCB stute.x1S (Ip51)
- 4x Diode ZPD 2V7
- 2x PB 4 black (4mm Banana)
- 1x PB 4 red (4mm Banana)
- 2x Socket PG 203 3.5mm st.
- 1x Resistor 2R0 or 2R2
- 2x Resistor 470R
- 1x Resistor 100R
- 1x Resistor 4k7
- 1x Switch TL36WO.104



**Schematic**

